



## *TDS 600 Series*

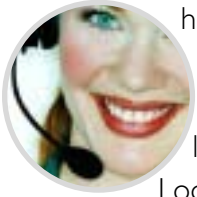
A TOTAL INTEGRATED LODGING SOLUTION



# TDS 600 Series

*A total integrated lodging solution*

**TransTel's** TDS Lodging Series is a feature-rich platform thoughtfully designed to accommodate as few as 10 rooms to over 600! A single system with multiple integrated solutions means you can say "goodbye" to training headaches and servicing various equipment types. Say "hello" to a solution that incorporates your



desired mix of administrative and guest telephones and the amount of outside lines needed for your Hotel. The TDS

Lodging Series is the system of choice for small to medium sized Hotels. On top of that add seamless integration of front desk and guest features that allow you to offer an unprecedented level of service to all that frequent your Hotel.

The TDS Lodging Package can be flexibly configured to serve not only your basic telephone needs but also acts as an Automated Attendant, Voice Mail, Front Desk Operations, Guest Services, Call Accounting and so much more.



## Front Desk Operations

*Simple as 1, 2, 3...*

Operations at the front desk could not be easier. Accessing features is a matter of pressing a "Hotel" key on the operator console followed by 1,2,3 etc. for the various features and following instructions from the LCD of the operator console, or entering the Voice Services Card and listening to voice guided feature prompts.



### *Via Digital Attendant Console*

- Hotel 1 Check In
- Hotel 2 Check Out
- Hotel 3 Message Waiting
- Hotel 4 Wake Up
- Hotel 5 Do Not Disturb
- Hotel 6 Toll Class
- Hotel 7 Reset Room Password
- Hotel 8 Admin Voice Services
- Hotel 9 Call Recording
- Hotel 0 \* Print Wake Up Call History
- Hotel 0 # Cancel Wake Up Call History

### *Via Voice Services Card*

- Dial 1 Check In & Out
- Dial 2 Automatic Wake Up
- Dial 3 Leave Voice Message
- Dial 4 Do Not Disturb
- Dial 5 External Message Check- Transfer outside parties to their mailbox.
- Dial 6 Reset Room Password
- Dial 7 Lock & Unlock Room Telephone
- Dial 8 Voice Services Administration



## Guest Services

*That pay dividends...*

When a guest enters the TDS Voice Services package, they are greeted with a friendly menu of options, not an array of confusing instructions more suited for business applications.

The system maintains its commitment to user friendliness by offering clear voice guided instructions for using and setting up features.

Your guests will be pleased with the services offered and how easy they are to use.

A guest simply dials a code to enter the Voice Services function and is greeted with the following menu.

*Dial 1 to play messages*

*Dial 2 for Automatic Wakeup*

*Dial 3 for Do Not Disturb*

*Dial 4 for password control*



## Key Feature Highlights

- Up to 640 Rooms
- Automated Attendant
- Day Greeting
- Night Greeting
- Lunch Greeting
- Holiday Greeting
- Voice Messaging
- Guest Mailbox
- Admin Mailbox
- Password Control
- Auto Wakeup
- Wakeup Call History
- Custom Wakeup Messages
- Message Waiting
- Do Not Disturb

- Least Cost Routing
- T1/E1 & ISDN
- Property Mgmt Interface
- Check In
- Check Out
- Room Status
- Toll Control
- Call Accounting
- Call Credit Limit
- Voice Guided Front Desk Operations
- Flexible Numbering Plan
- Voice Guided Guest Features
- Custom Messages On Hold
- Emergency 911 Service
- Custom Voice Messages

- Single Digit Dialing
- Room to room dialing control
- Elevator Phones
- Calling Room Display
- Automatic Day & Night Switching
- and more!





## System Capacities

	TDS40	TDS80	TDS160	TDS240	TDS320	TDS400	TDS480	TDS560	TDS640
Cabinets	1	1	2	3	4	5	6	7	8
Max. Stations	32	80	160	240	320	400	480	560	640
Digital Stations Max	32	80	160	240	320	400	480	560	640
Single Line Stations Max	32	80	160	240	320	400	480	560	640
Access Control Phones Max	32	80	160	240	320	400	480	560	640

## Trunking and Outside Lines

	TDS40		TDS80		TDS160		TDS240		TDS320		TDS400		TDS480		TDS560		TDS640	
Outside Lines (max) <i>Note 1</i>	28/32		36/54		92/104		144/162		192/216		240/255		255/255		255/255		255/255	
Outside Line Card Slots	2		5		10		15		20		25		30		35		40	
Analog CO Lines (max)	16		40		80		120		160		200		240		255		255	
Digital Channels T1/E1	24 T1	30 E1	24 T1	30 E1	48 T1	60 E1	72 T1	90 E1	96 T1	120 E1	120 T1	150 E1	144 T1	180 E1	168 T1	210 E1	192 T1	240 E1
Combo Digital (T1) & Analog Lines	24	8	24	24	48	48	72	72	96	96	120	120	144	144	168	168	192	192
VOIP Slots/Channels (max)	2	6	2	6	4	12	6	18	8	24	10	30	12	36	14	42	16	48
Voice Service Slots (Max) <i>Note 2</i>	1		2		4		6		8		10		12		14		16	

*Note 1:* Total outside line capacity using T1 and E1 digital trunks • *Note 2:* MGCP protocol supports 3 channels per card  
SIP protocol supports 2 channels per card



1095 Jupiter Park Drive, Suite 7  
Jupiter, Florida 33458

Phone: 561.747.4466 | Fax: 561.747.4578  
[www.transtelcommunications.com](http://www.transtelcommunications.com)